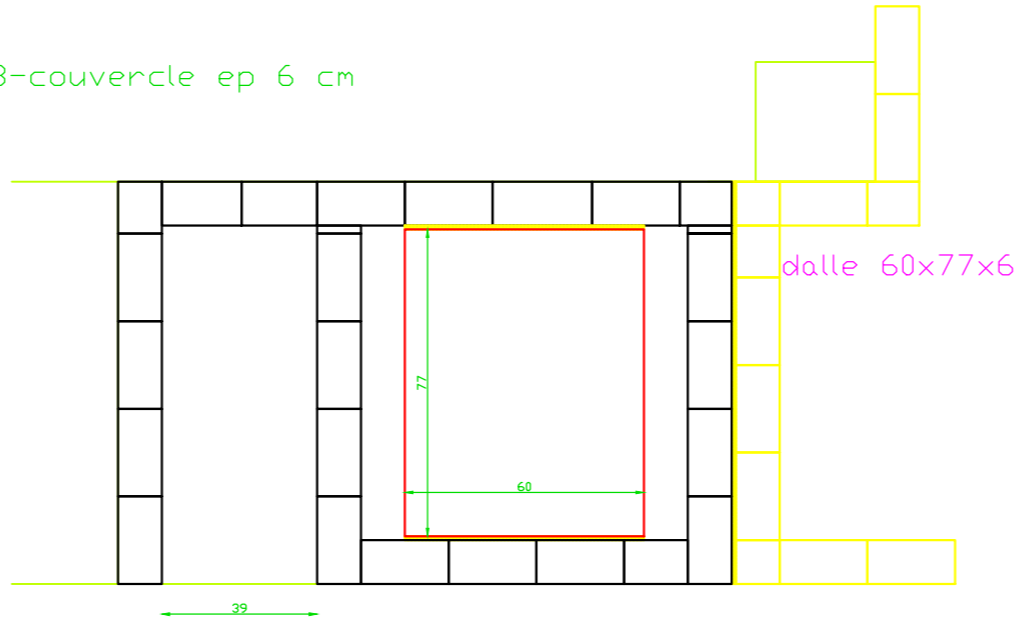
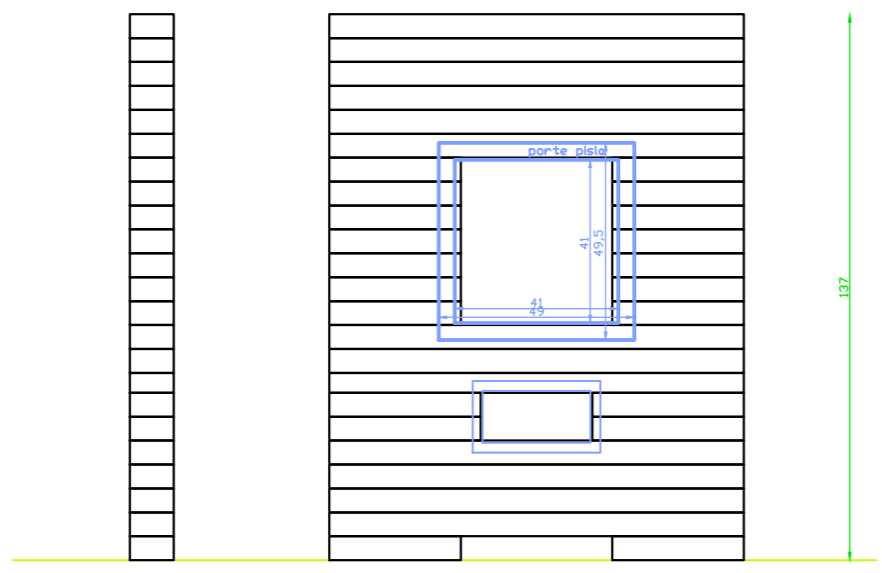
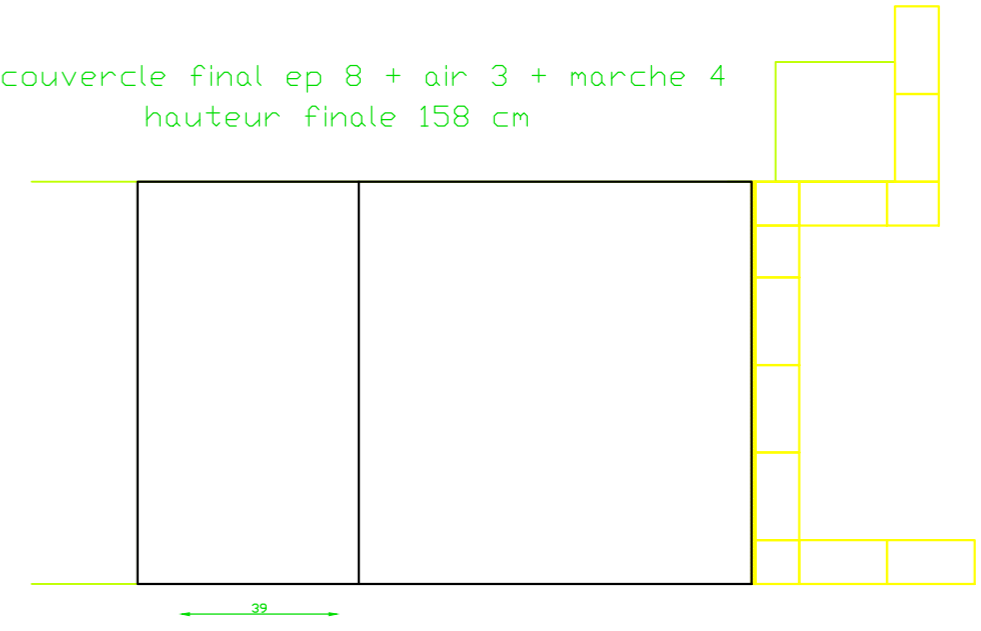


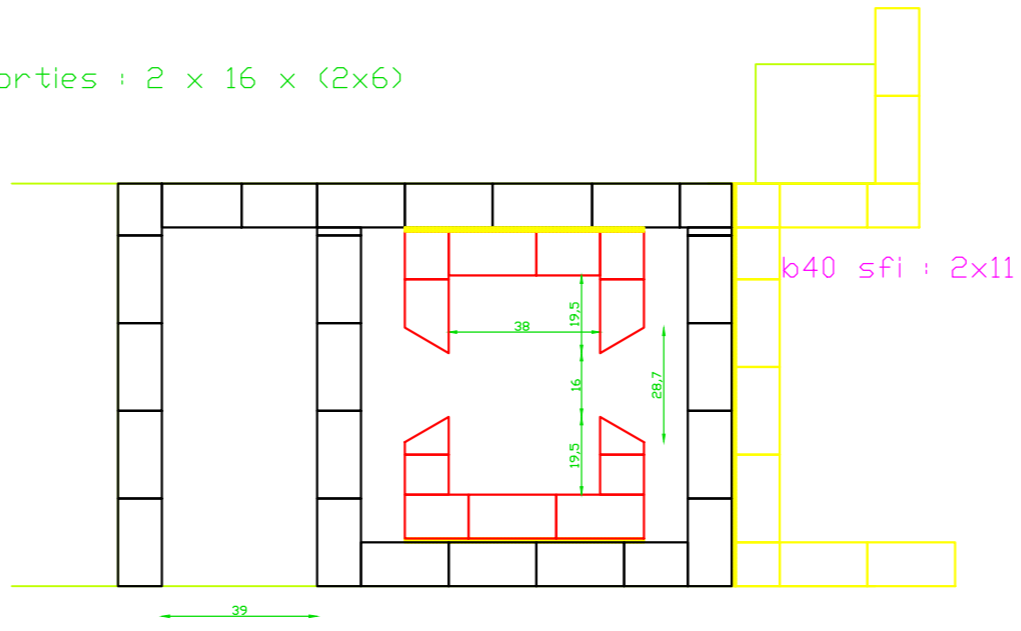
13-couvercle ep 6 cm



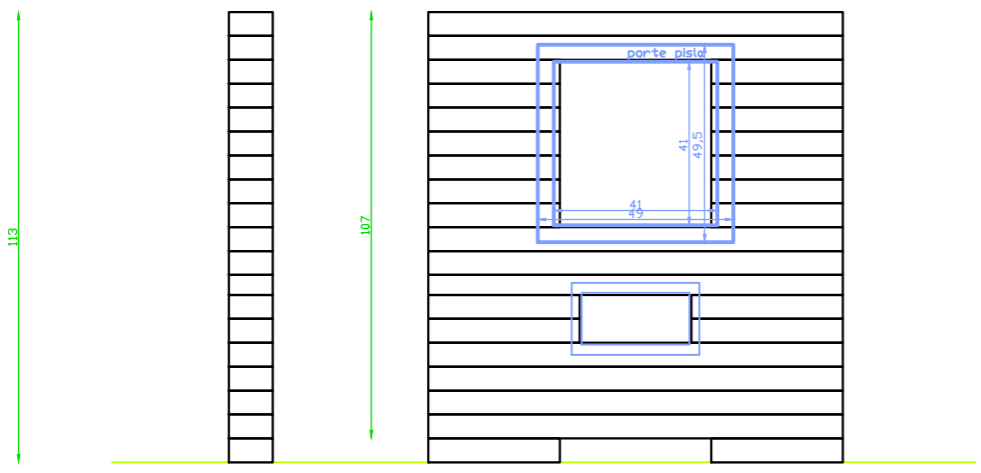
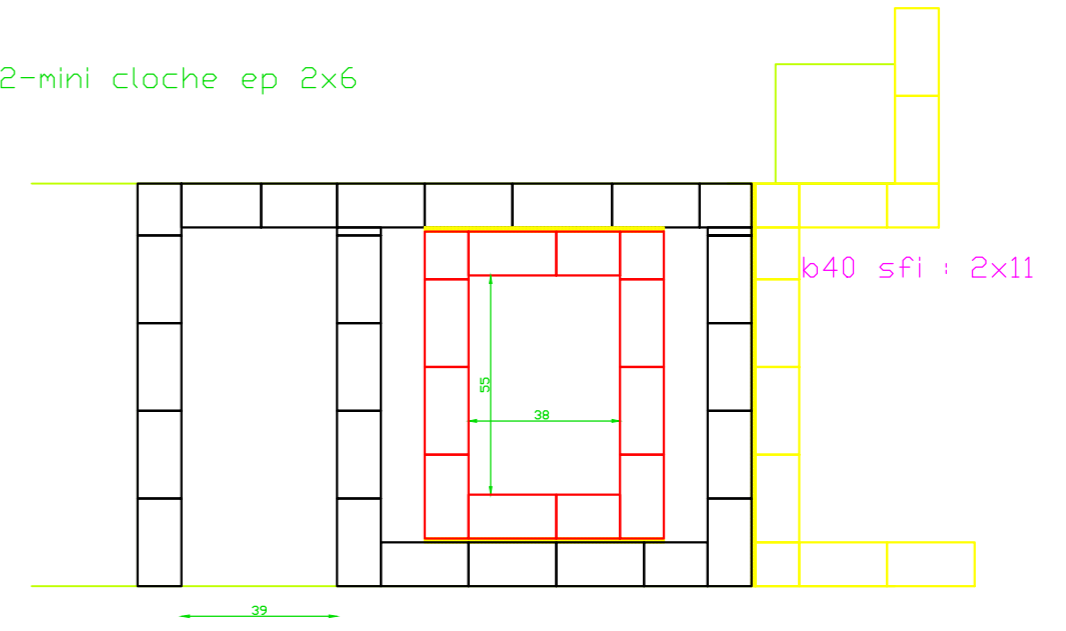
14-couvercle final ep 8 + air 3 + marche 4 hauteur finale 158 cm



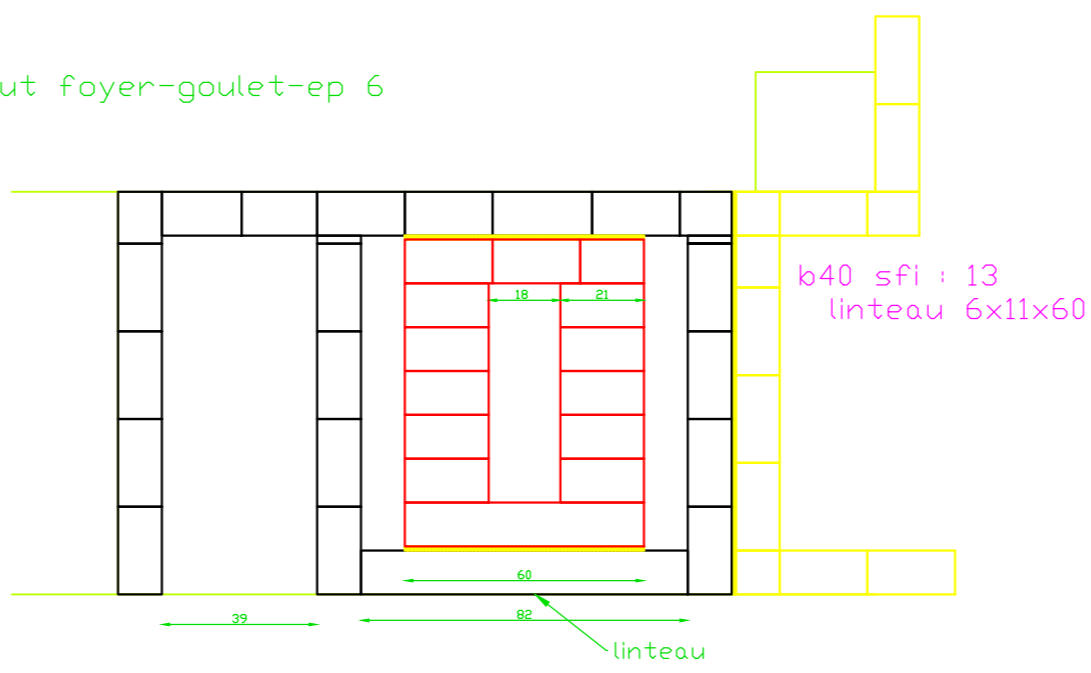
11-sorties : 2 x 16 x (2x6)



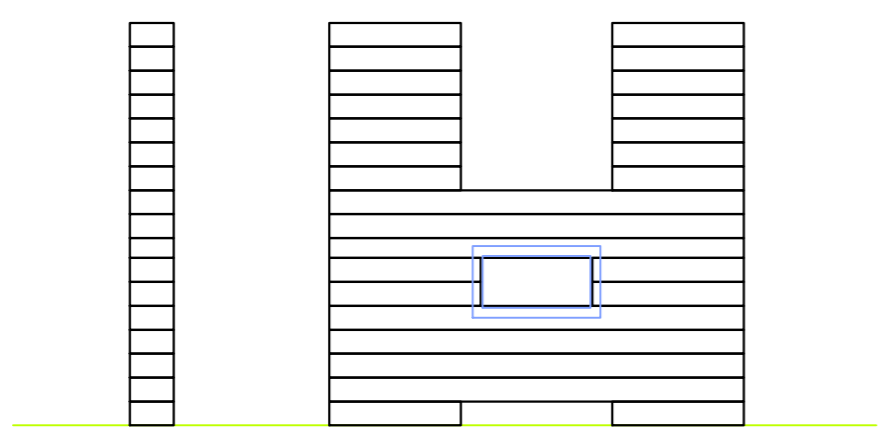
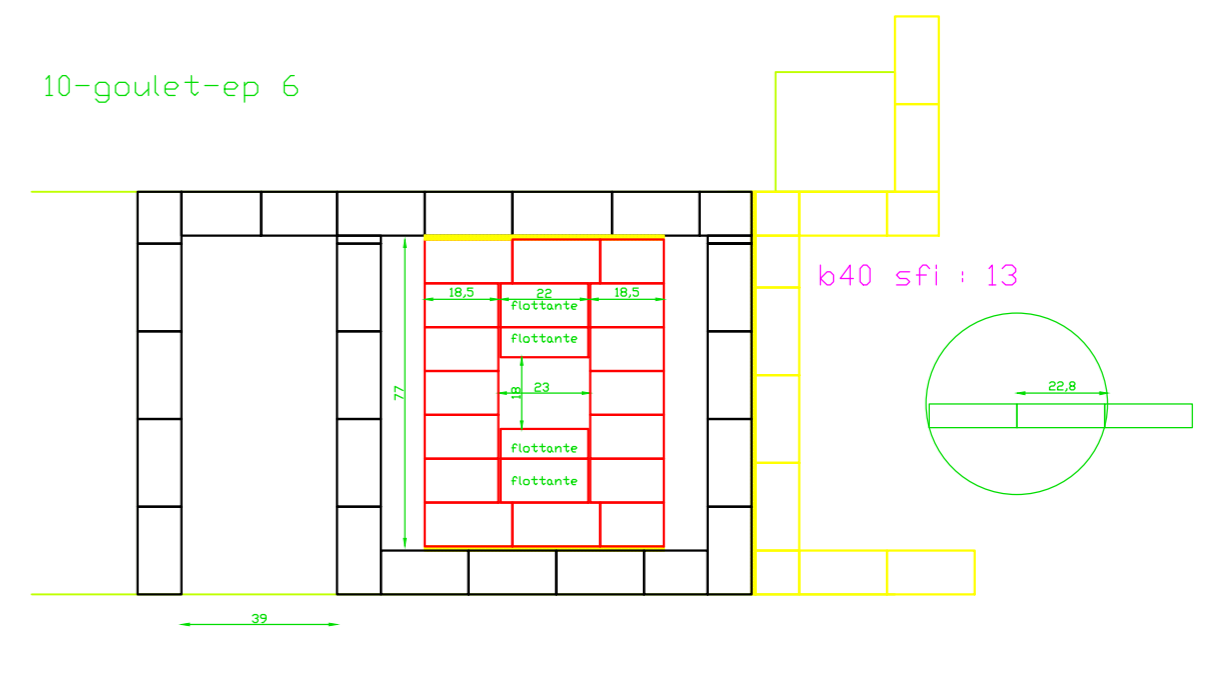
12-mini cloche ep 2x6



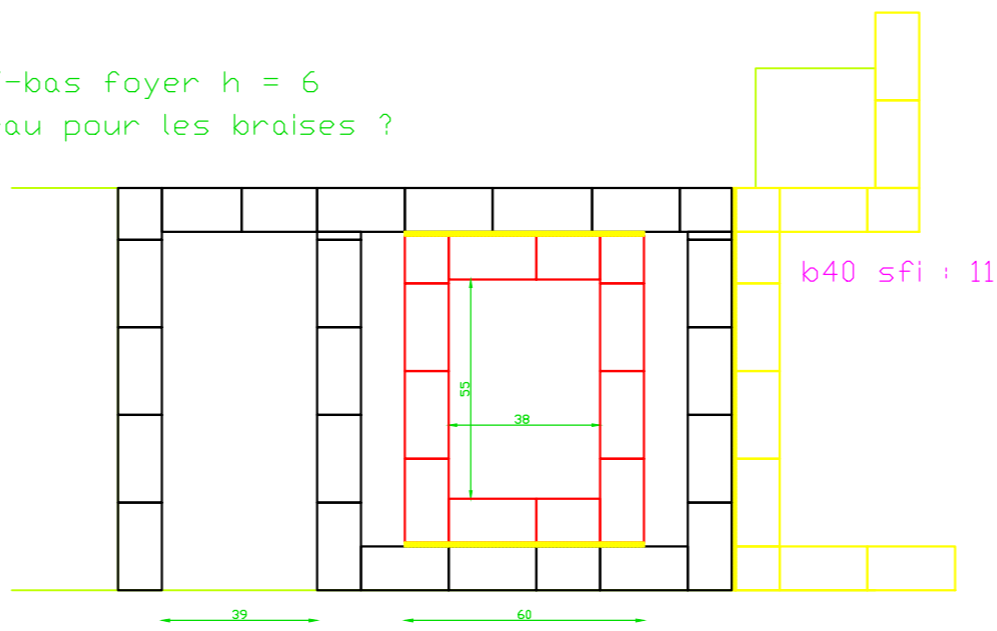
9-haut foyer-goulet-ep 6



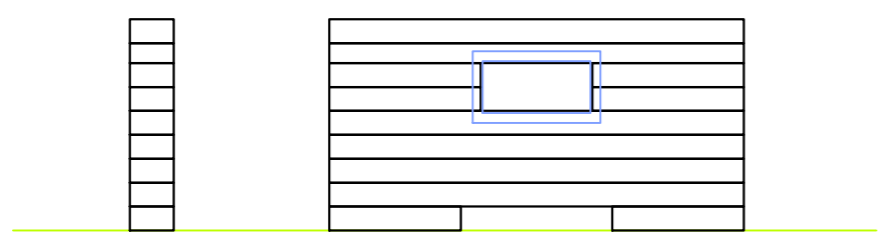
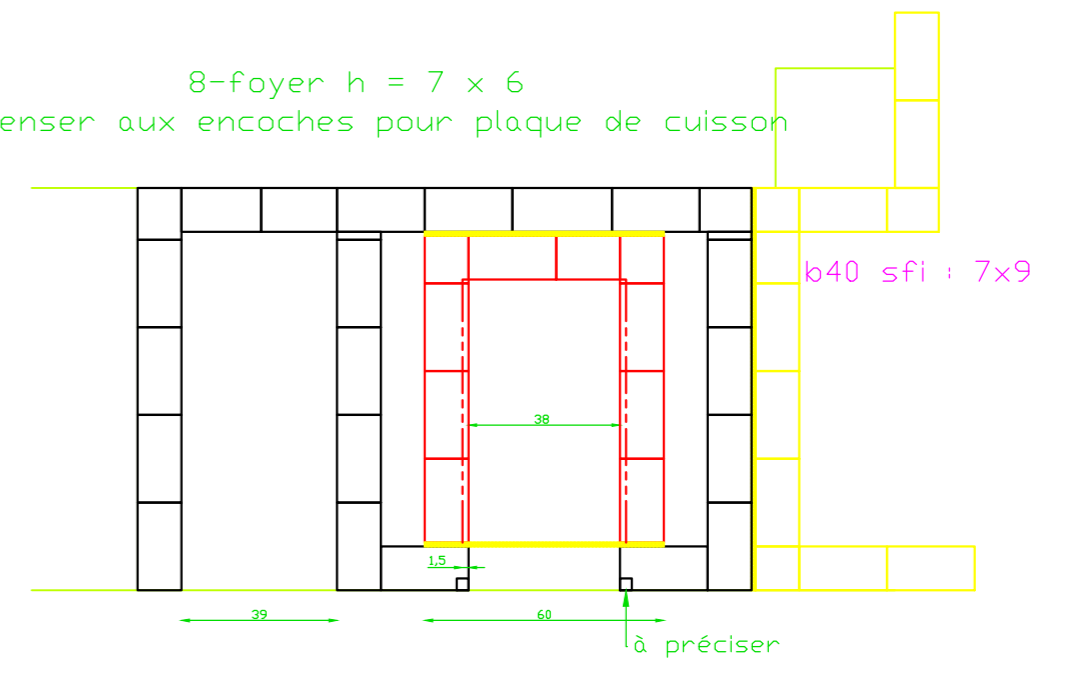
10-goulet-ep 6



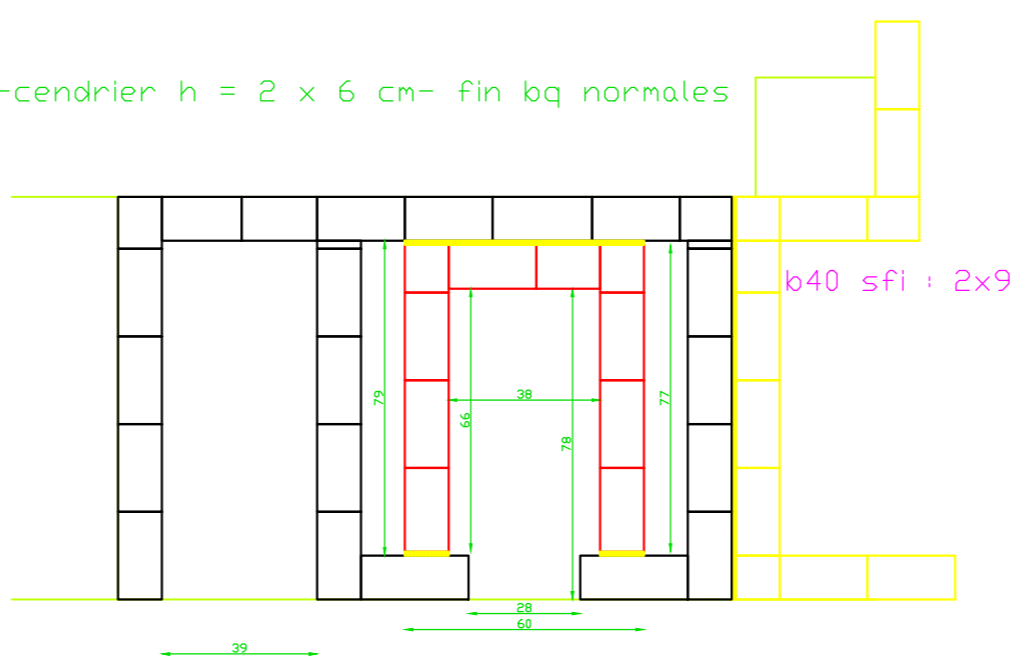
7-bas foyer h = 6 biseau pour les braiseuses ?



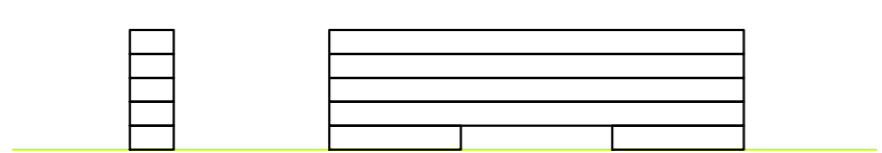
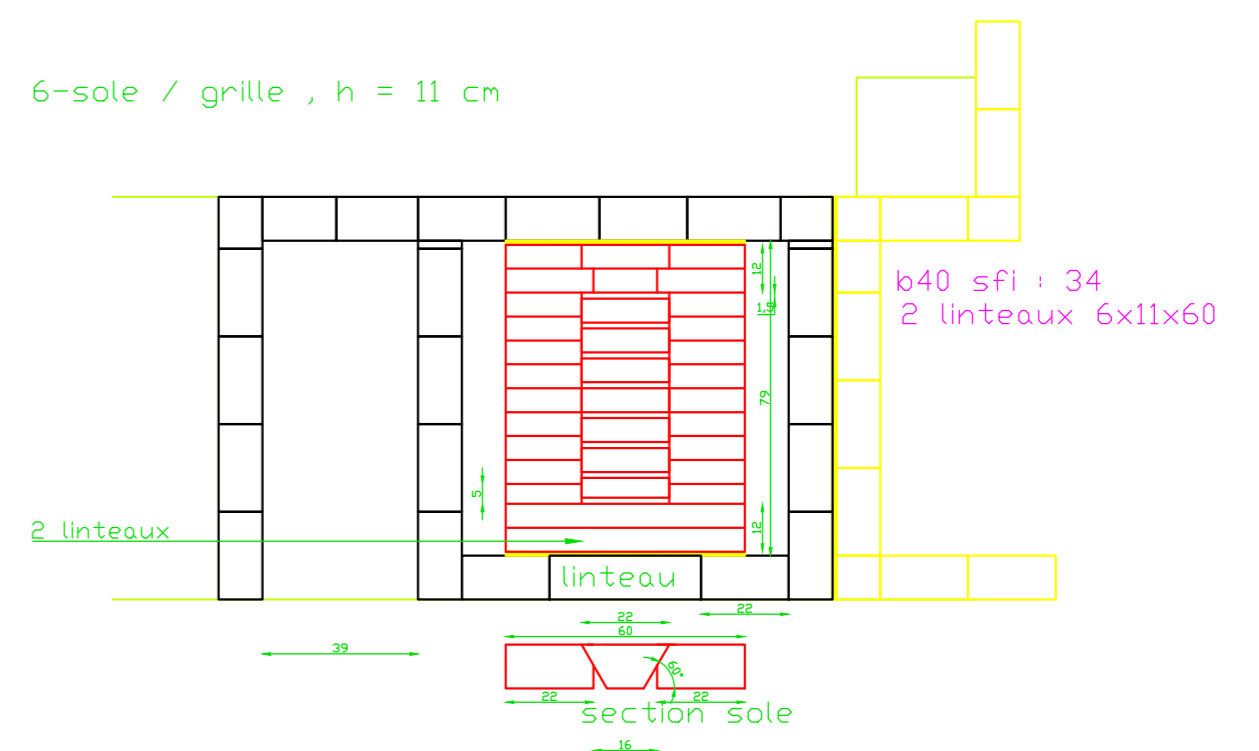
8-foyer h = 7 x 6 penser aux encoches pour plaque de cuisson



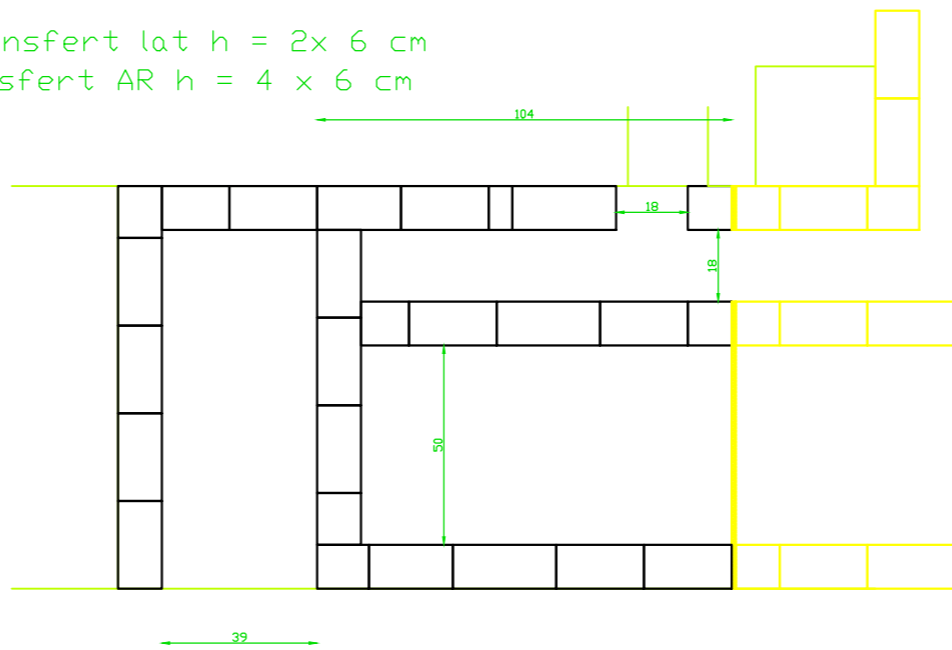
5-cendrier h = 2 x 6 cm- fin bq normales



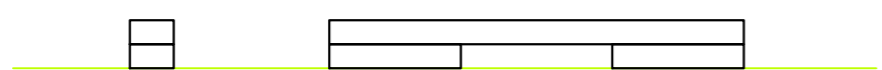
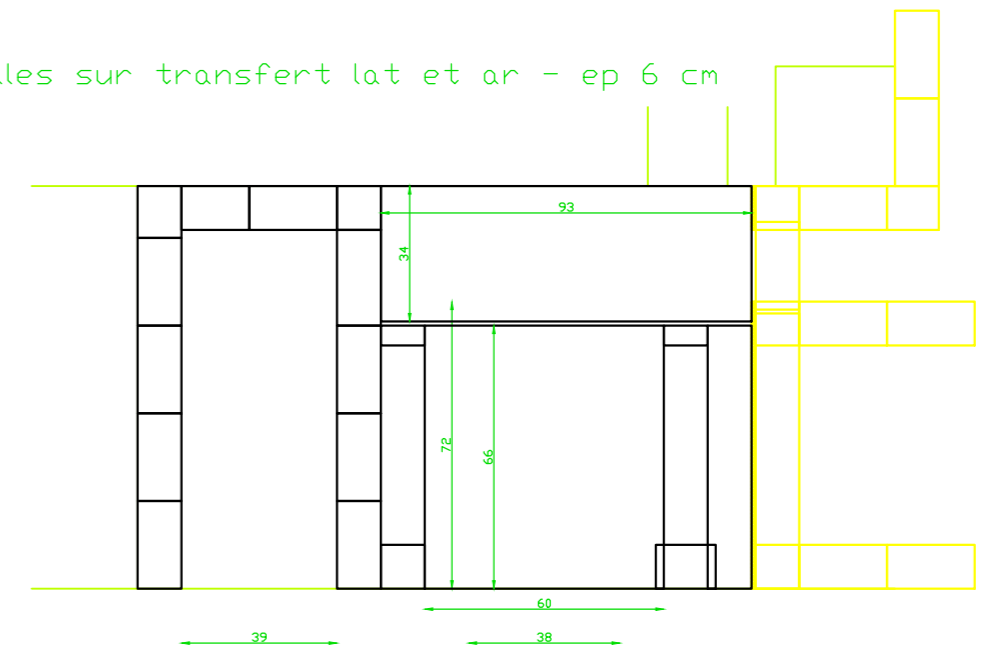
6-sole / grille , h = 11 cm



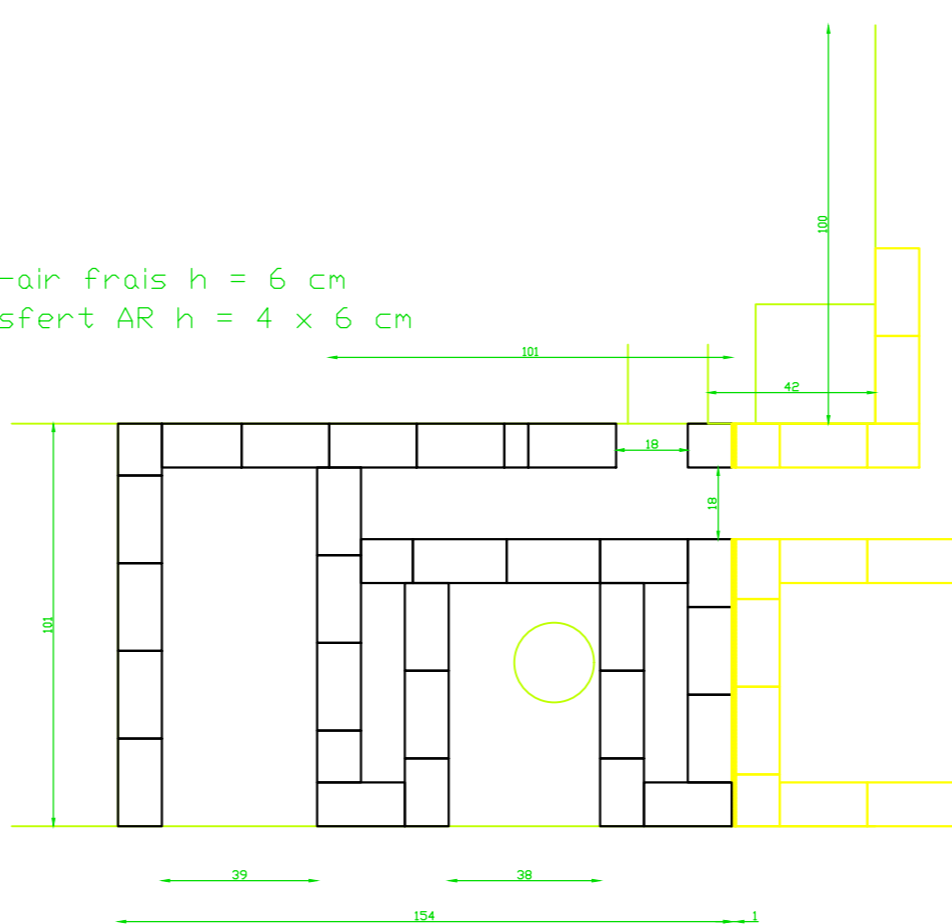
3-transfert lat h = 2x 6 cm transfert AR h = 4 x 6 cm



4-dalles sur transfert lat et ar - ep 6 cm



1-air frais h = 6 cm transfert AR h = 4 x 6 cm



2-dalle sur air frais h = 6 cm

